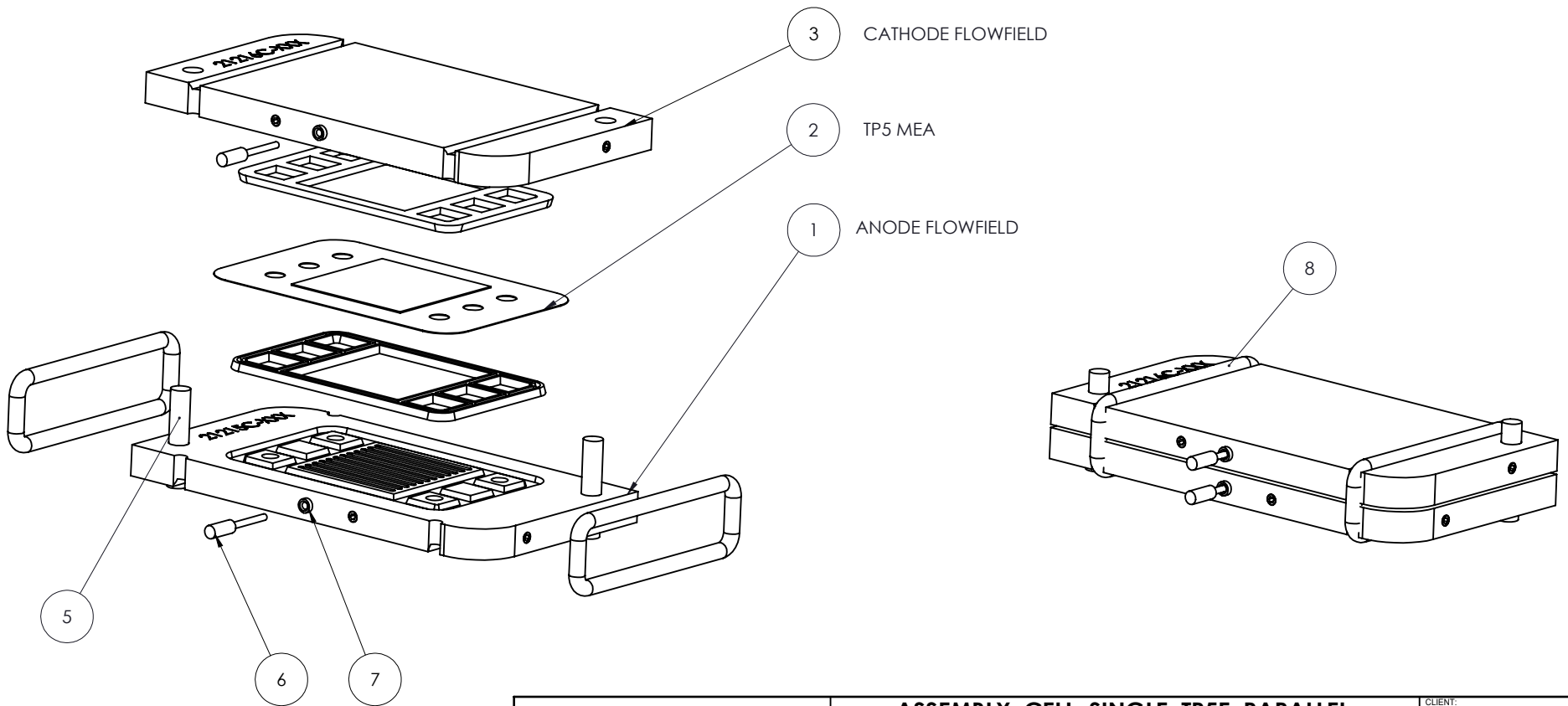
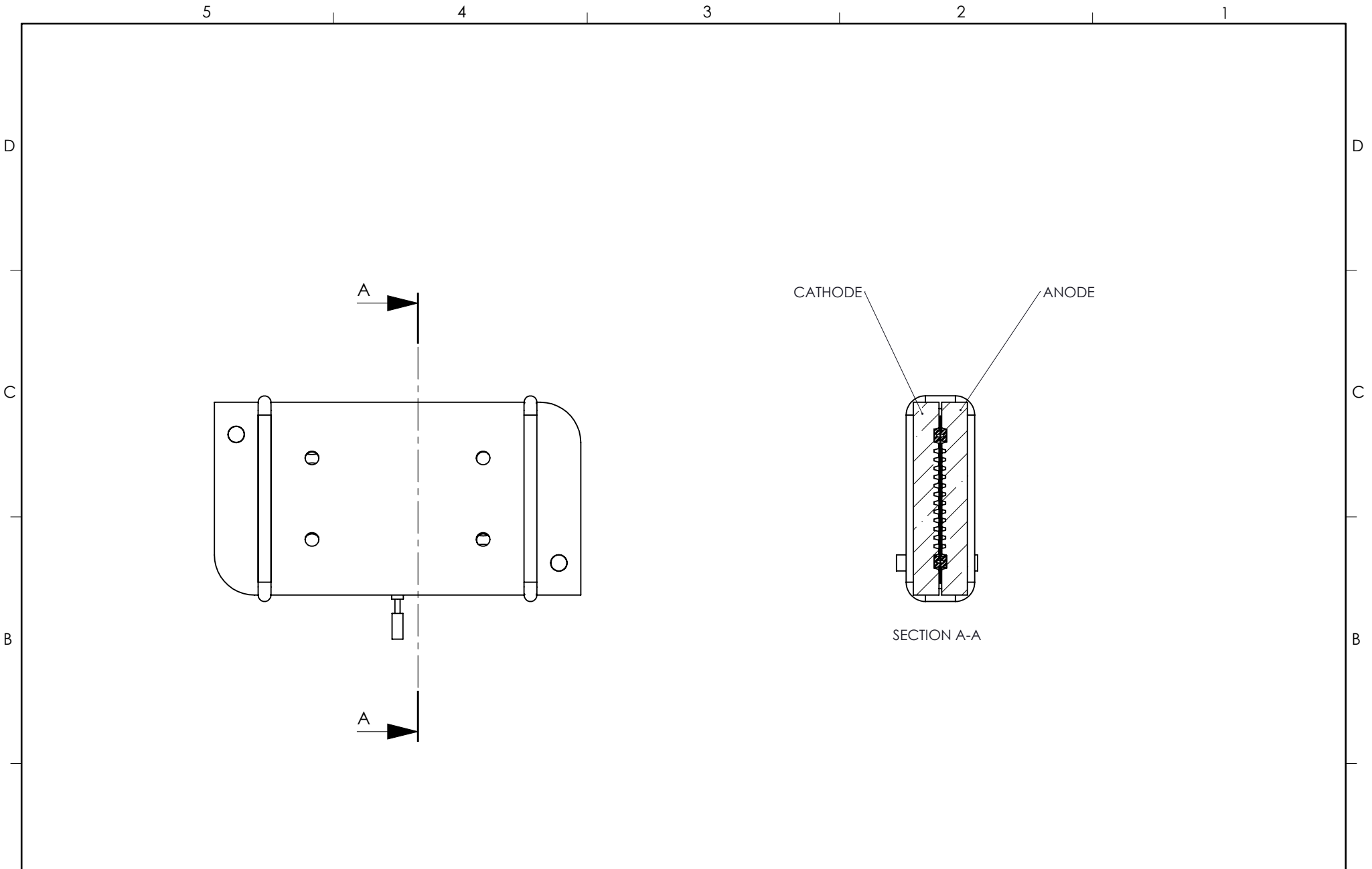


| | | | | | | | |
|--|--|-----------|--------------|----------|--------------------------|------------|--------|
| TANDEM | ASSEMBLY, TP5E, HIGH TEMPERATURE | | CLIENT: | | | | |
| | | | PROJECT: | 20 | | | |
| B <small>PROPRIETARY AND CONFIDENTIAL THE INFORMATION CONTAINED IN THIS DRAWING IS THE SOLE PROPERTY OF TANDEM TECHNOLOGIES LTD. ANY REPRODUCTION IN PART OR AS A WHOLE WITHOUT THE WRITTEN PERMISSION OF TANDEM TECHNOLOGIES LTD. IS PROHIBITED.</small> | DEBUR & BREAK SHARP EDGES | MATERIAL: | DRAWN BY: | G:JL | DATE DRAWN (DD/MM/YYYY): | 11/04/2014 | |
| | DO NOT SCALE DRAWING | | APPROVED BY: | G:JL | DATE APPROVED: | | |
| | TOLERANCES: 0.0 +/- 0.050 ANGULAR 0.00 +/- 0.010 +/- .5 deg 0.000 +/- 0.003 | | WG: (lbs): | SCALE: | 1:2 | SHEET: | 1 OF 2 |
| | UNLESS OTHERWISE SPECIFIED DIMENSIONS ARE IN INCHES. | | DRAWING NO: | 30-1093D | | REV: | B |

| ITEM NO. | PART NUMBER | DESCRIPTION | QTY. |
|----------|-------------|-------------------------------------|------|
| 1 | 20-1215C | PLATE, TP5E, ANODE, PARALLEL | 1 |
| 2 | 30-1008 | MEA, TP5, TYPICAL | 1 |
| 3 | 20-1216C | PLATE, TP5E, CATHODE, PARALLEL | 1 |
| 4 | 20-1014 | SEAL, RIBBED, TP5, ALL PORTS | 2 |
| 5 | 20-1013 | ROD, GUIDE, TP5 ALIGNMENT | 2 |
| 6 | PS-1017 | D-SUBMINIATURE CONNECTOR | 2 |
| 7 | PS-1016 | SPRING CONTACT | 2 |
| 8 | 40-1009B | O-RING - N70-122 | 2 |
| 9 | PS1013 | #2-56 X 3/16 SOCKET SETSCREW, SS316 | 8 |



| | | | | | | | |
|--|---|--------------------------------------|--------------|--------------------|---|-------------------------|----------------------|
| TANDEM | ASSEMBLY, CELL, SINGLE, TP5E, PARALLEL | | | CLIENT: | | | |
| | | | | PROJECT: 30 | | | |
| PROPRIETARY AND CONFIDENTIAL THE INFORMATION CONTAINED IN THIS DRAWING IS THE SOLE PROPERTY OF TANDEM TECHNOLOGIES LTD. ANY REPRODUCTION IN PART OR AS A WHOLE WITHOUT THE WRITTEN PERMISSION OF TANDEM TECHNOLOGIES LTD. IS PROHIBITED. | A | DEBUR & BREAK SHARP EDGES | | MATERIAL: | DESIGN BY: GJL | DESIGN DATE: 16/05/2011 | |
| | | DO NOT SCALE DRAWING | | WGT (gr): | DRAWN BY: GJL | DRAW DATE: 13/01/2013 | |
| | | TOLERANCES: | | | SCALE: 1:1 | VAULT REF: | SHEET: 1 OF 2 |
| | | 0.0 +/- 0.50 | 0.0 +/- 0.20 | ANGULAR +/- .5 deg | UNLESS OTHERWISE SPECIFIED DIMENSIONS ARE IN mm. | | DRAWING NO: 30-1102C |
| | | 0.00 +/- 0.10 | | | | | |
| | | 0.000 +/- 0.05 | | | | | |



| | | | | | |
|---------------|---|--|---|---------------------------|--------------------------|
| TANDEM | ASSEMBLY, CELL, SINGLE, TP5E, PARALLEL | | | CLIENT: | |
| | PROPRIETARY AND CONFIDENTIAL <small>THE INFORMATION CONTAINED IN THIS DRAWING IS THE SOLE PROPERTY OF TANDEM TECHNOLOGIES LTD. ANY REPRODUCTION IN PART OR AS A WHOLE WITHOUT THE WRITTEN PERMISSION OF TANDEM TECHNOLOGIES LTD. IS PROHIBITED.</small> | | | PROJECT: 30 | |
| A | | | | DEBUR & BREAK SHARP EDGES | |
| | DO NOT SCALE DRAWING | | WGT (gr): | DRAWN BY: GJL | DRAW DATE: 13/01/2013 |
| | TOLERANCES: 0.0 +/- 0.50 0.0 +/- 0.20 ANGLAR 0.00 +/- 0.10 +/- .5 deg 0.000 +/- 0.05 | | SCALE: 1:1 | | Vault Ref: SHEET: 2 OF 2 |
| | | | UNLESS OTHERWISE SPECIFIED DIMENSIONS ARE IN mm. | | DRAWING NO: 30-1102C |
| | | | | | REV: A |

5
4
3
2
1

D
C
B
A

A
B
C
D

1
2
3
4
5