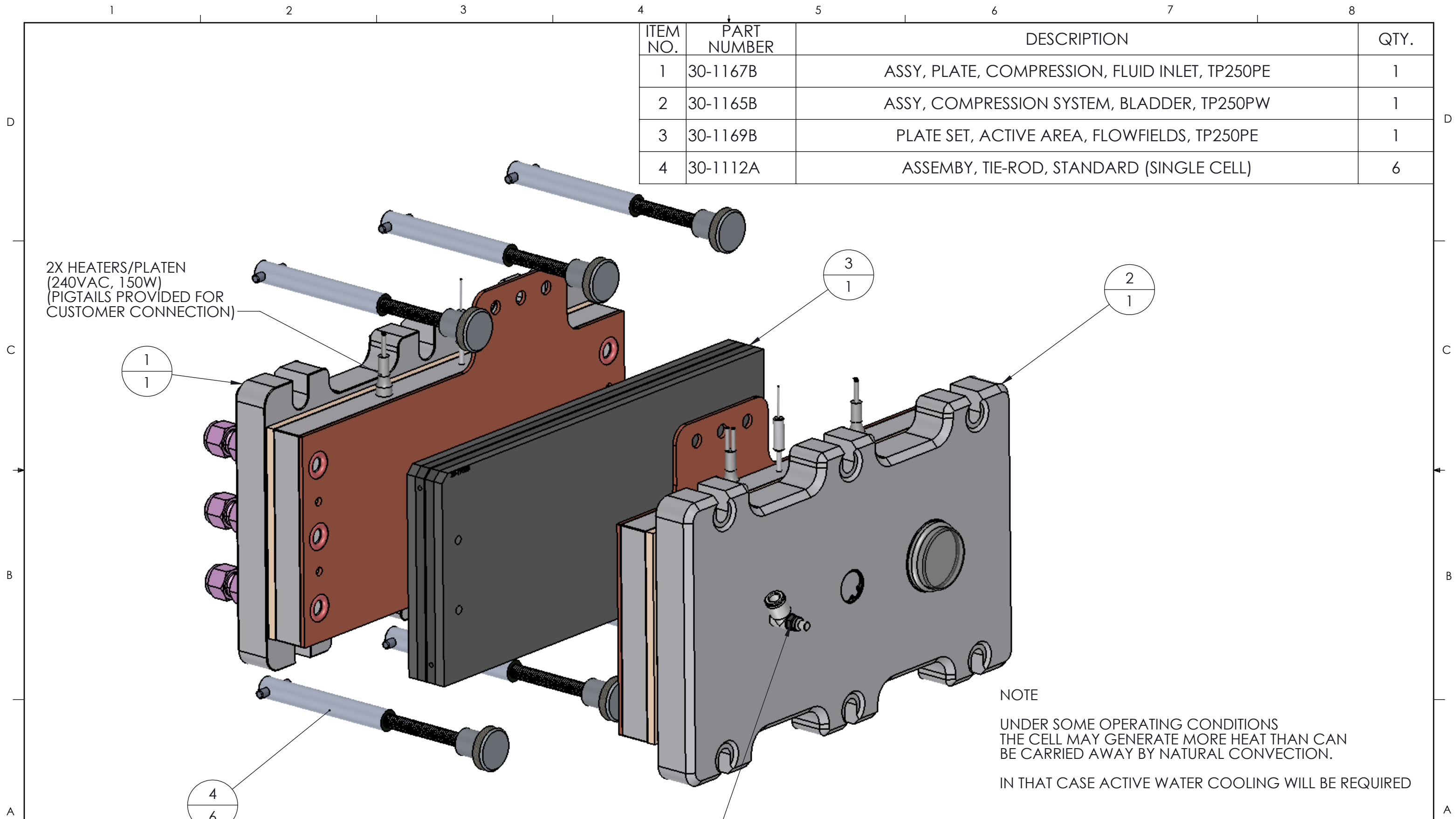


ITEM NO.	PART NUMBER	DESCRIPTION	QTY.
1	30-1167B	ASSY, PLATE, COMPRESSION, FLUID INLET, TP250PE	1
2	30-1165B	ASSY, COMPRESSION SYSTEM, BLADDER, TP250PW	1
3	30-1169B	PLATE SET, ACTIVE AREA, FLOWFIELDS, TP250PE	1
4	30-1112A	ASSEMBLY, TIE-ROD, STANDARD (SINGLE CELL)	6



2X HEATERS/PLATEN
(240VAC, 150W)
(PIGTAILS PROVIDED FOR
CUSTOMER CONNECTION)

1
1

3
1

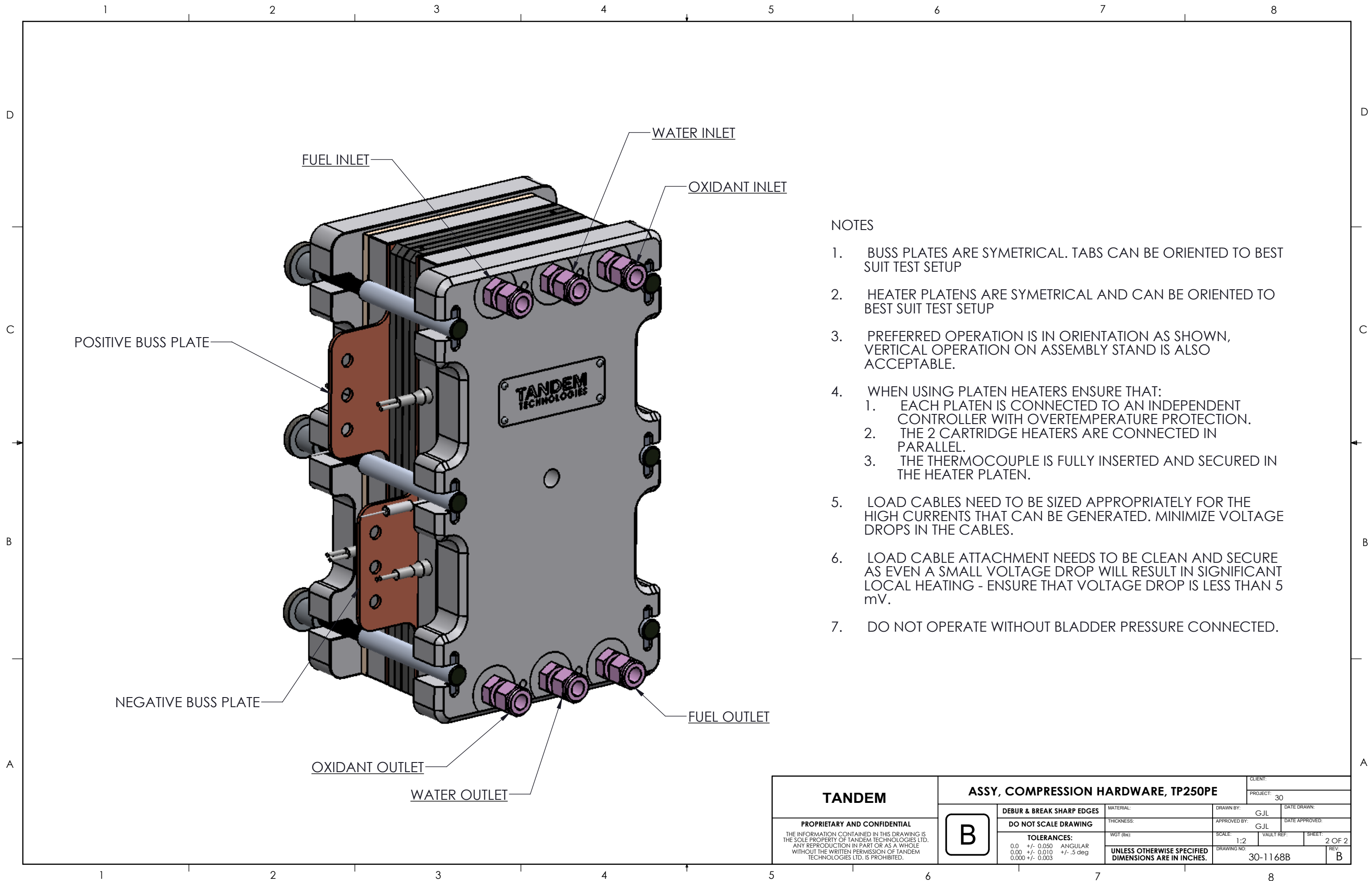
2
1

4
6

BLADDER CONNECTION
1/4" TUBE (MAX 130 PSIG)

NOTE
UNDER SOME OPERATING CONDITIONS
THE CELL MAY GENERATE MORE HEAT THAN CAN
BE CARRIED AWAY BY NATURAL CONVECTION.
IN THAT CASE ACTIVE WATER COOLING WILL BE REQUIRED

TANDEM	ASSY, COMPRESSION HARDWARE, TP250PE		CLIENT:		
			PROJECT: 30		
	B		DEBUR & BREAK SHARP EDGES	MATERIAL:	DRAWN BY: G.JL
			DO NOT SCALE DRAWING		DATE DRAWN (DD/MM/YY): 30/08/2015
<small>PROPRIETARY AND CONFIDENTIAL THE INFORMATION CONTAINED IN THIS DRAWING IS THE SOLE PROPERTY OF TANDEM TECHNOLOGIES LTD. ANY REPRODUCTION IN PART OR AS A WHOLE WITHOUT THE WRITTEN PERMISSION OF TANDEM TECHNOLOGIES LTD. IS PROHIBITED.</small>		<small>TOLERANCES:</small> 0.0 +/- 0.050 ANGULAR 0.00 +/- 0.010 +/- .5 deg 0.000 +/- 0.003		APPROVED BY: G.JL	
		<small>UNLESS OTHERWISE SPECIFIED DIMENSIONS ARE IN INCHES.</small>		DATE APPROVED: SCALE: 1:2 DRAWING NO: 30-1168B SHEET: 1 OF 2 REV: B	



NOTES

1. BUSS PLATES ARE SYMETRICAL. TABS CAN BE ORIENTED TO BEST SUIT TEST SETUP
2. HEATER PLATENS ARE SYMETRICAL AND CAN BE ORIENTED TO BEST SUIT TEST SETUP
3. PREFERRED OPERATION IS IN ORIENTATION AS SHOWN, VERTICAL OPERATION ON ASSEMBLY STAND IS ALSO ACCEPTABLE.
4. WHEN USING PLATEN HEATERS ENSURE THAT:
 1. EACH PLATEN IS CONNECTED TO AN INDEPENDENT CONTROLLER WITH OVERTEMPERATURE PROTECTION.
 2. THE 2 CARTRIDGE HEATERS ARE CONNECTED IN PARALLEL.
 3. THE THERMOCOUPLE IS FULLY INSERTED AND SECURED IN THE HEATER PLATEN.
5. LOAD CABLES NEED TO BE SIZED APPROPRIATELY FOR THE HIGH CURRENTS THAT CAN BE GENERATED. MINIMIZE VOLTAGE DROPS IN THE CABLES.
6. LOAD CABLE ATTACHMENT NEEDS TO BE CLEAN AND SECURE AS EVEN A SMALL VOLTAGE DROP WILL RESULT IN SIGNIFICANT LOCAL HEATING - ENSURE THAT VOLTAGE DROP IS LESS THAN 5 mV.
7. DO NOT OPERATE WITHOUT BLADDER PRESSURE CONNECTED.

TANDEM	ASSY, COMPRESSION HARDWARE, TP250PE		CLIENT:	
	B		PROJECT: 30	
			DRAWN BY: G.JL DATE DRAWN:	
	PROPRIETARY AND CONFIDENTIAL <small>THE INFORMATION CONTAINED IN THIS DRAWING IS THE SOLE PROPERTY OF TANDEM TECHNOLOGIES LTD. ANY REPRODUCTION IN PART OR AS A WHOLE WITHOUT THE WRITTEN PERMISSION OF TANDEM TECHNOLOGIES LTD. IS PROHIBITED.</small>		APPROVED BY: G.JL DATE APPROVED:	
TOLERANCES: 0.0 +/- 0.050 ANGULAR 0.00 +/- 0.010 +/- .5 deg 0.000 +/- 0.003				
DEBUR & BREAK SHARP EDGES DO NOT SCALE DRAWING		MATERIAL: THICKNESS: WGT (lbs):		SCALE: 1:2 DRAWING NO: 30-1168B
UNLESS OTHERWISE SPECIFIED DIMENSIONS ARE IN INCHES.		VAULT REF:		SHEET: 2 OF 2 REV: B